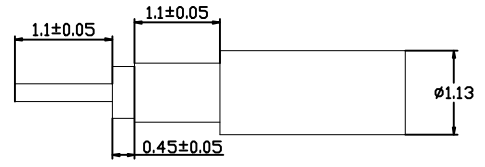
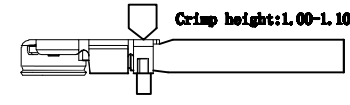
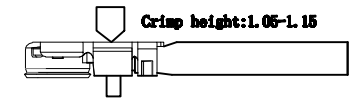
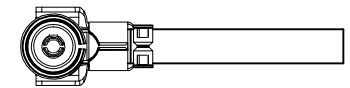
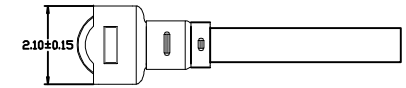
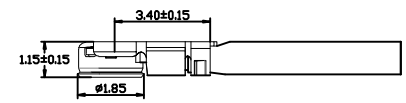
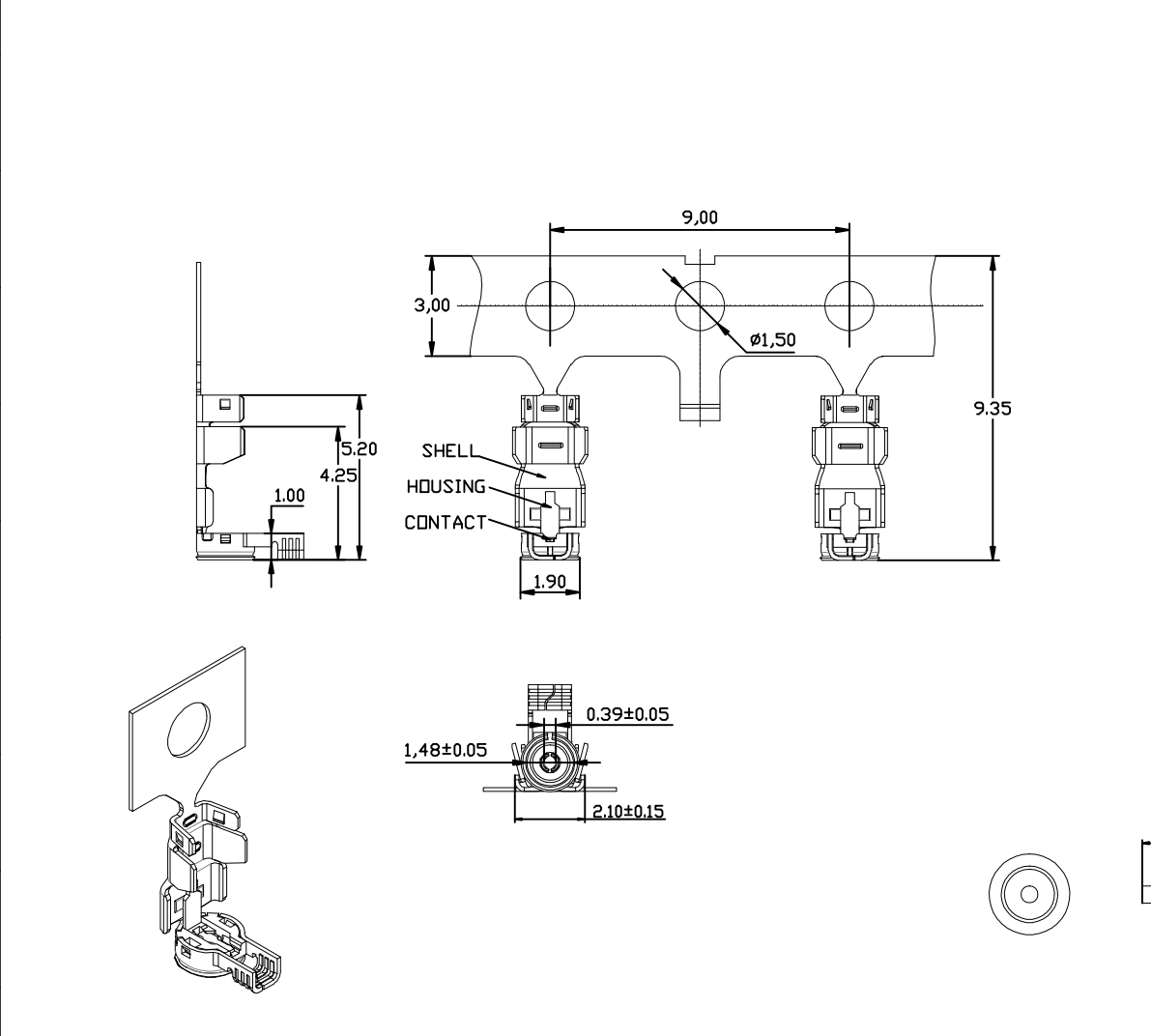


非汽车件

变更项目	变更内容	修改人	修改日期	客户版本	内部版本
新产品	新增项	陈洪	2023.5.29	A	A0

A  
B  
C  
D  
E

A  
B  
C  
D  
E



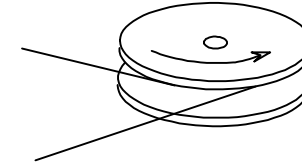
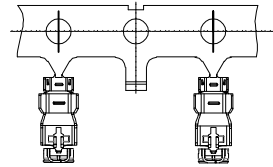
3	SHELL	COPPER ALLOY	GOLD PLATED OVER NI
2	CONTACT	COPPER ALLOY	GOLD PLATED OVER NI
1	HOUSING	PA66	UL94-0
NO	NAME	MATERIAL	DESCRIPTION

UNITS: mm		PART NO.:	昆山埃姆普电子科技有限公司 Kunshan Empires Electronics Technology Co., Ltd.
X.±	X <sup>o</sup> ±	KS-MHF-B13-N-01	
.XX±0.2	.X <sup>o</sup> ±0.1	APPD:	
.XX±0.10	.XX <sup>o</sup> ±	CHKD:	
.XXX±	.XXX <sup>o</sup> ±	DR: Jesen	DWG NO.:

MHF-B13-N-01		
SCALE	SHEET	REV.
NONE	1/2	A0

1 2 3 4 5 6 7 8

非汽车件



PACKAGE DIRECTION

NOTES:

1. PERFORMANCE

1-1. ELECTRICAL CHARACTERISTICS;

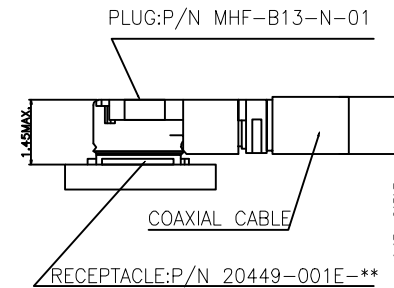
- 1-1-1.VOLTAGE RATING: 60V AC/DC
- 1-1-2.CURRENT VS. TEP. RISE: 0.3A AC/DC,30°C RISE Max;
- 1-1-3.CONTACT RESISTANCE : INITIAL 20 MILLIOHMS Max;  
 AFTER ENVIRONMENTAL : 25 MILLIOHMS Max;
- 1-1-4.INSULATION RESISTANCE: 500 MEGOHMS Min.
- 1-1-5.DIELECTRIC WITHSTANDING VOLTAGE : 200V AC/Minute
- 1-1-6.VSWR : 1.3Max AT 0.1-3GHZ; 1.5Max AT 3-6GHZ

1-2. MECHANICAL CHARACTERISTICS;

- 1-2-1.MATING FORCE AND UNMATING FORCE,SEE ITEM  
 MATING FORCE: 3Kgf Max.  
 UNMATING FORCE: 0.3Kgf Min.
- 1-2-2.DURABILITY: 30 TIMES

1-3. ENVIRONMENT CHARACTERISTICS;

- 1-3-1.OPERATING TEMPERATURE : -30°C TO +80°C;
- 1-3-2.STORAGE TEMPERATURE : -45°C TO +85°C;



- 2. CABLE RETENTION FORCE:1.5Kgf Min
- 3. HARMFUL MATERIAL CONTROL PLEASE FOLLOW RoHS COMPLIANT.
- 4. SHELL: gold-plated layer 0.5 u min CONTACT: gold-plated layer 3 u min
- 5. Salt spray test: 48 h

3	SHELL	COPPER ALLOY	GOLD PLATED OVER NI
2	CONTACT	COPPER ALLOY	GOLD PLATED OVER NI
1	HOUSING	PA66	UL94-0
NO	NAME	MATERIAL	DESCRIPTION

UNITS: mm		PART NO.:	山东盛明电子科技有限公司 Shandong Siming Electronics Technology Co., Ltd.
X.±	X'±	KS-MHF-B13-N-01	
.XX±0.2	.X'±0.1	APPD:	DWG NO.: MHF-B13-N-01
.XX±0.10	.XX'±	CHKD:	SCALE SHEET REV. NONE 2/2 A0
.XXX±	.XXX'±	DR: Jesen	